

# 123 GENTING LANE

## FOR LEASE - B1 GENERAL INDUSTRIAL



Nestled in the Macpherson Industrial Estate, 123 Genting Lane is an 8-storey building suitable for light industrial activities, the newly refreshed property is close to Aljunied MRT station and Macpherson MRT station. It is also within walking distance to Mattar MRT.



### ACCESSIBILITY

- Accessible via Mattar MRT station and Aljunied MRT station
- Well-served by PIE and KPE

# BUILDING SPECIFICATIONS

## Unit Size

- Ranges from 1,600 - 20,000 sf

## Floor Loading

- 1st storey - 19.2 kN/m<sup>2</sup>
- 2nd - 3rd storey - 14.4 kN/m<sup>2</sup>
- 4th - 6th storey - 9.6 kN/m<sup>2</sup>
- 7th - 8th storey - 5.0 kN/m<sup>2</sup>

## Ceiling Height

- 1st storey - 4.6 m
- 2nd - 3rd storey - 4.5 m
- 4th - 8th storey - 3.5 m

## Lifts

- 1 Fireman lift (1,150 kg)
- 1 Passenger lift (1,150 kg)
- 2 Cargo lifts (4,000 kg)

## Loading/Unloading

- 2 loading/unloading bays with 1 dock leveller

## Car Parking

- 56 unsheltered lots

## Unit Electrical Provision

- 40 to 300 amps 3 Phase

## Security

- CCTV cameras complete with digital video recorder
- 24hr security surveillance

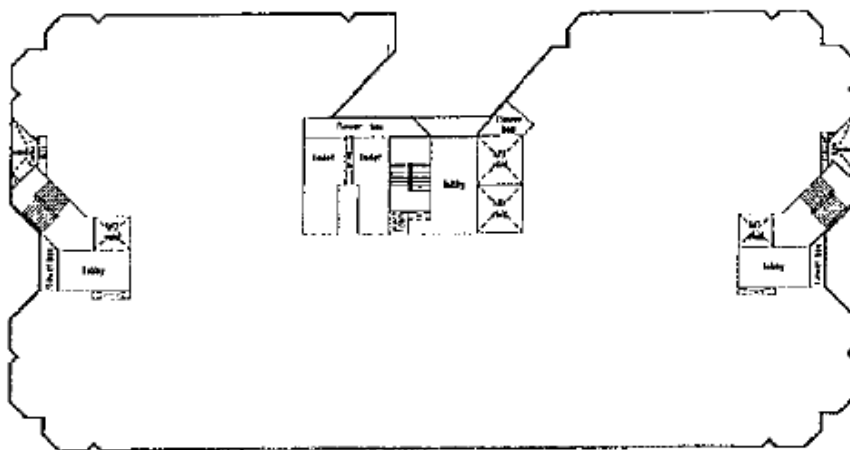
## Amenities Around

- Eateries nearby

## Signage

- Signage rights available to selected tenants, subject to payment of license fee

# TYPICAL FLOOR PLAN



---

## CONTACT US

+65 6580 7760

[leasing@sabana.com.sg](mailto:leasing@sabana.com.sg)