

# 2 TOH TUCK LINK

FOR LEASE - B2 WAREHOUSE & LOGISTICS



Located within the Toh Tuck Logistics Hub is 2 Toh Tuck Link, a part 4-/part 6-storey warehouse building with a basement carpark. With its close proximity to the Toh Tuck Flyover and residential areas along Toh Guan Road, complemented with its 20 & 40-footer loading bays, it is a boon to logistics and last-mile delivery companies.



## ACCESSIBILITY

- Well-served by Pan Island Expressway and Ayer Rajah Expressway
- Accessible by Jurong East MRT station along East-West line and North-South Line

# BUILDING SPECIFICATIONS

## Unit Size

- Ranges from 600 - 32,000 sf

## Lifts

- 1 Passenger lift (900 kg)
- 2 Cargo lifts (5,000 kg)

## Unit Electrical Provision

- 63 to 100 amps 3 phase

## Floor Loading

- Basement car park - 20.0 kN/m<sup>2</sup>
- 1st - 6th storey ancillary office - 2.5 kN/m<sup>2</sup>
- 1st - 4th storey warehouse - 15.0 kN/m<sup>2</sup>

## Loading/Unloading

- 7 loading/unloading bays with dock levellers

## Security

- CCTV cameras complete with digital video recorder
- 24hr security surveillance

## Ceiling Height

- Basement car park - 3.5 m
- 1st storey ancillary office - 5.5 m
- 2nd - 6th storey ancillary office - 4.0 m
- 1st storey warehouse - 7.4 m
- 2nd storey warehouse - 6.4 m
- 3rd storey warehouse - 8.0 m
- 4th storey warehouse - 13.0 m

## Car Parking

- 14 Lots

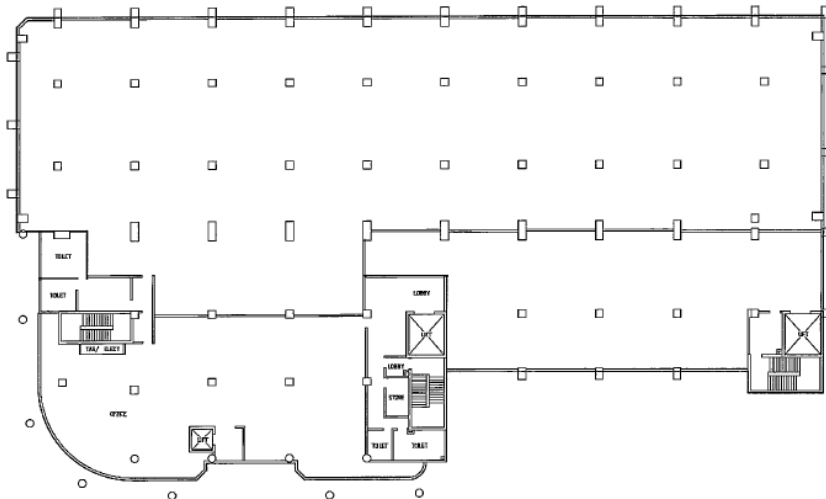
## Amenities Around

- Eateries nearby

## Signage

- Signage rights available to selected tenants, subject to payment of license fee

# TYPICAL FLOOR PLAN



## CONTACT US

+65 6580 7760

[leasing@sabana.com.sg](mailto:leasing@sabana.com.sg)