

51 PENJURU ROAD

FOR LEASE - B2 WAREHOUSE & LOGISTICS



Located on the street of Penjur Road, within the West Coast area, is 51 Penjur Road - a purpose-built warehouse building, ideal for logistics and 3rd party logistics providers. It comes with large floor plates as well as an ASRS system (Automated Storage and Retrieval System).



ACCESSIBILITY

- Close proximity to the PSA Terminals, Jurong Port and Jurong Island
- Accessible via Ayer Rajah Expressway (AYE)
- Accessible by Jurong East MRT station along the East-West Line

BUILDING SPECIFICATIONS

Unit Size

- Ranges from 2,000 - 66,000 sf

Floor Loading

- 1st - 4th storey ancillary office - 5.0 kN/m²
- 1st storey mezzanine - 5.0 kN/m²
- 2nd storey production - 7.5 kN/m²
- 1st - 3rd storey warehouse - 25.0 kN/m²
- 1st storey ASRS warehouse - 90.0 kN/m²
- 4th storey warehouse - 20.0 kN/m²

Ceiling Height

- 1st - 4th storey ancillary office - 4.5 m
- 1st storey mezzanine - 4.3 m
- 1st storey warehouse - 7.2 m
- 1st storey ASRS warehouse - 33.0 m
- 2nd - 3rd storey warehouse - 8.9 m
- 4th storey warehouse - 7.7 m

Signage

- Signage rights available to selected tenants, subject to payment of license fee

Lifts

- 1 Passenger lift (1,020 kg)
- 1 Fireman lift (750 kg)
- 2 Cargo lifts (6,000 kg)

Loading/Unloading

- 12 loading/unloading bays with dock levellers

Car Parking

- 16 sheltered lots

Unit Electrical Provision

- 63 to 100 amps 3 phase

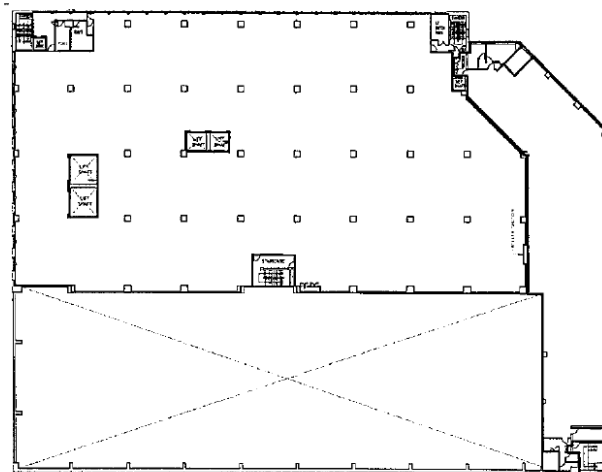
Security

- CCTV cameras complete with digital video recorder
- 24hr security surveillance

Amenities Around

- Eateries nearby

TYPICAL FLOOR PLAN



CONTACT US

+65 6580 7760

leasing@sabana.com.sg